

Q1410

Silk Road

BY DEBRA™
VALENCIA

PRESENTED BY
INSIGHTS

FREE
PATTERN
OFFERED
IN INDEPENDENT
QUILT SHOPS TO
COMPLEMENT THIS
FABRIC COLLECTION.



PUNCH - TWIN COVERLET
APPROX. SIZE: 54 1/2" X 68 1/2"



SUGGESTED PILLOWCASES

 Like us on
Facebook

Silk Road - Punch

Please read all instructions carefully before starting. All instructions include a 1/4" seam allowance and strips are cut from selvage to selvage unless otherwise stated.

1. Cut the following:

Fabric A - Borders: Cut 6 - 6 1/2" strips, sew end to end, then subcut 2 - 6 1/2" x 57" and 2 - 6 1/2" x 43" (measure your quilt for the exact lengths to cut)

Fabric B - Cut 2 - 5 1/2" strips
Cut 1 - 6 1/2" x 6 1/2" square

Fabric C - Cut 4 - 5 1/2" strips, subcut 10 - 5 1/2" x 10 1/2"

Cut 1 - 6 1/2" x 6 1/2" square

Fabric D - Cut 2 - 5 1/2" strips
Cut 1 - 6 1/2" x 6 1/2" square

Fabric E - Cut 2 - 5 1/2" strips
Cut 1 - 6 1/2" x 6 1/2" square

Fabric F - Cut 7 - 3" strips, subcut 20 - 3" x 10 1/2"
Cut 2 - 3 1/2" x 3 1/2" squares

BINDING - Cut 7 - 2 1/4" strips, sew end to end and press in half

Fabric G - Cut 2 - 3" strips
Cut 1 - 3 1/2" x 3 1/2" square

Fabric H - Cut 2 - 3" strips
Cut 1 - 3 1/2" x 3 1/2" square

Fabric I - Cut 2 - 5 1/2" strips
Cut 1 - 3 1/2" x 3 1/2" square

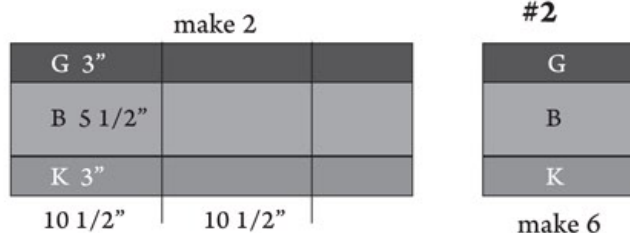
Fabric J - Cut 2 - 5 1/2" strips
Cut 1 - 3 1/2" x 3 1/2" square

Fabric K - Cut 2 - 3" strips
Cut 1 - 3 1/2" x 3 1/2" square

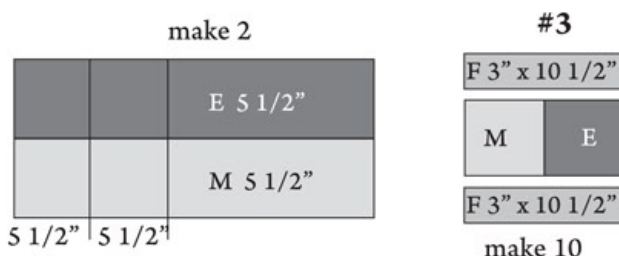
Fabric L - Cut 2 - 3" strips
Cut 1 - 3 1/2" x 3 1/2" square

Fabric M - Cut 2 - 5 1/2" strips

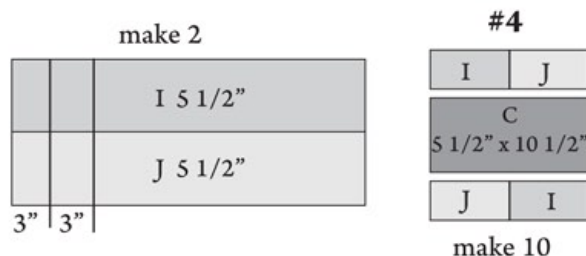
2. Make 6 - 10" finished (10 1/2" unf.) **Block #2.** Make 2 strip sets by sewing **G 3"**, **B 5 1/2"**, and **K 3"** strips side by side. Press to 1 side. Subcut 6 - 10 1/2" blocks.



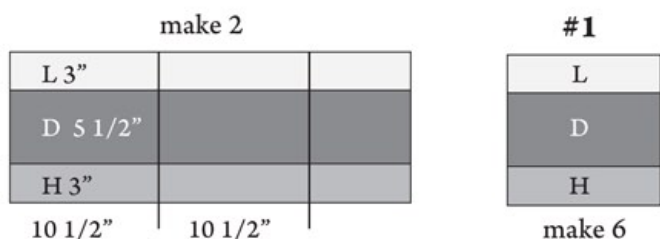
3. Make 10 - 10" finished (10 1/2" unf.) **Block #3.** First, make 2 strip sets by sewing **E** and **M 5 1/2"** strips side by side. Press. Subcut 10 - 5 1/2" segments. Then sew **F 3"** x 10 1/2" to the TOP and BOTTOM of **E/M** segments according to the diagram.



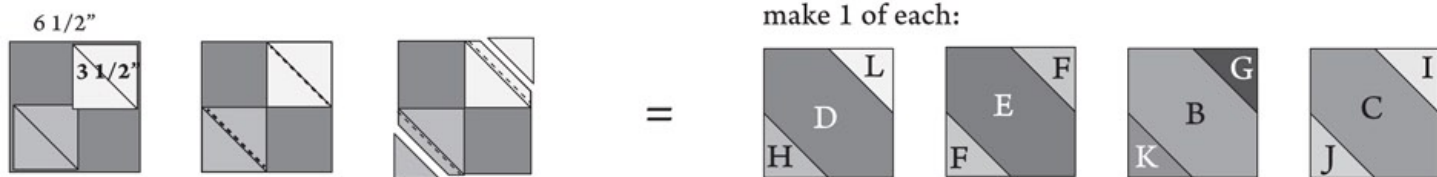
4. Make 10 - 10" finished (10 1/2" unf.) **Block #4.** First, make 2 strip sets by sewing **I** and **J 5 1/2"** strips side by side. Press. Subcut 20 - 3" segments. Then sew segments to the TOP and BOTTOM of **C 5 1/2"** x 10 1/2" according to the diagram.



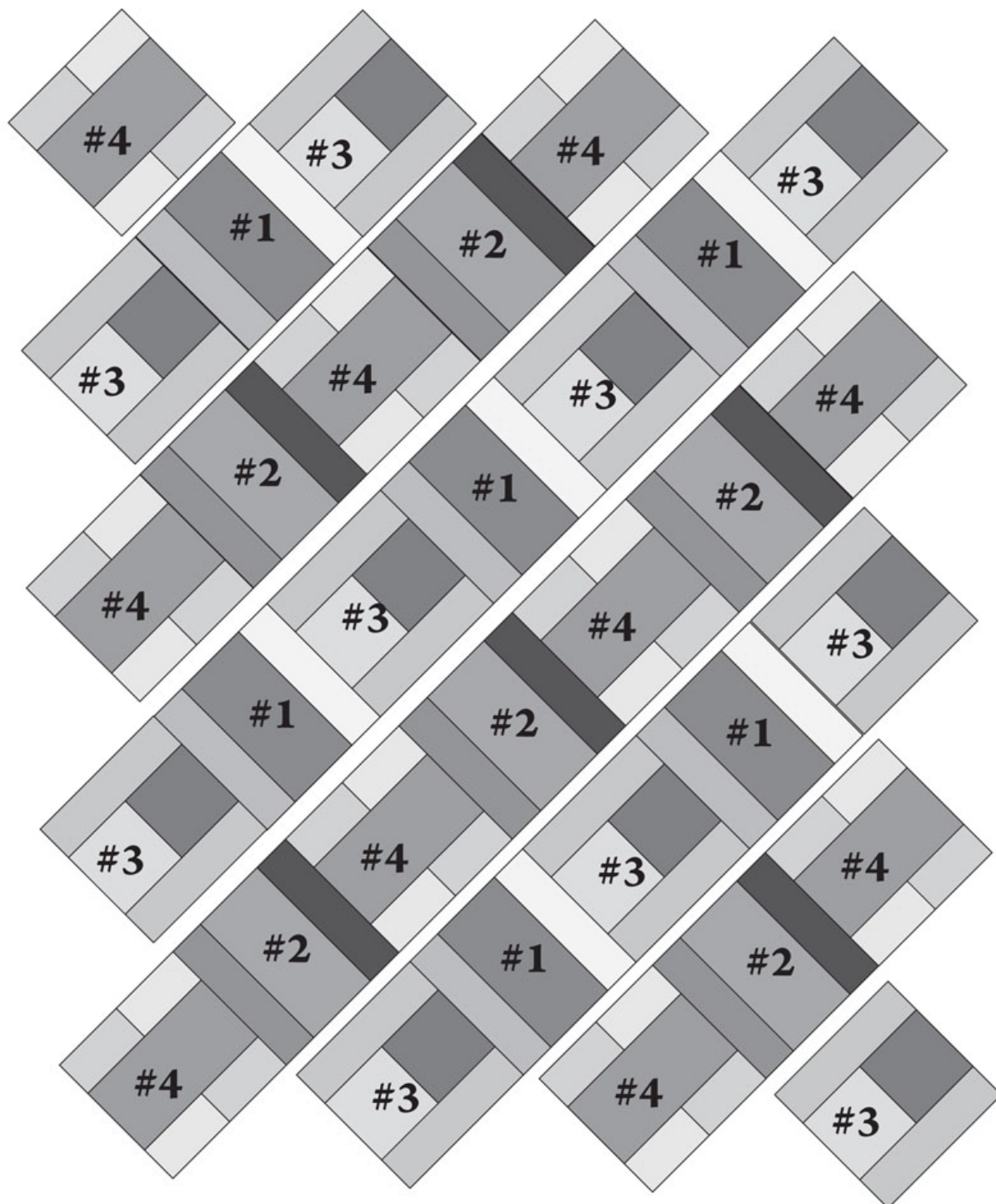
1. Make 6 - 10" finished (10 1/2" unf.) **Block #1.** Make 2 strip sets by sewing **L 3"**, **D 5 1/2"**, and **H 3"** strips side by side. Press to 1 side. Subcut 6 - 10 1/2" blocks.



5. Make 4 different 6" finished (6 1/2" unf.) Corner blocks. First, draw a diagonal line on the back side of 2 F, G, H, I, J, K, and L 3 1/2" squares. Place a 3 1/2" square on opposite corners of B, C, D, and E 6 1/2" squares (right sides together). Match corners and pay attention to the direction of the diagonal lines according to the diagram. Stitch on the diagonal lines, trim 1/4" from the seams, and press outward. Repeat for all blocks according to the diagrams.



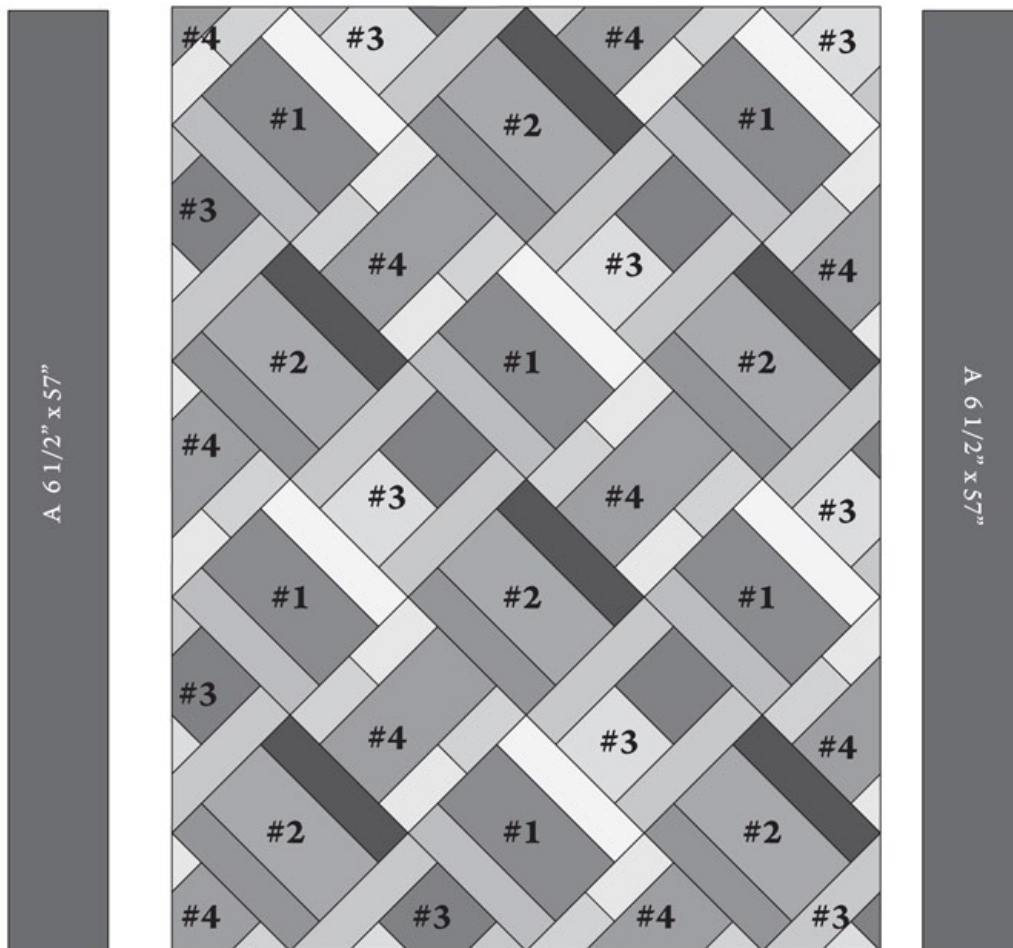
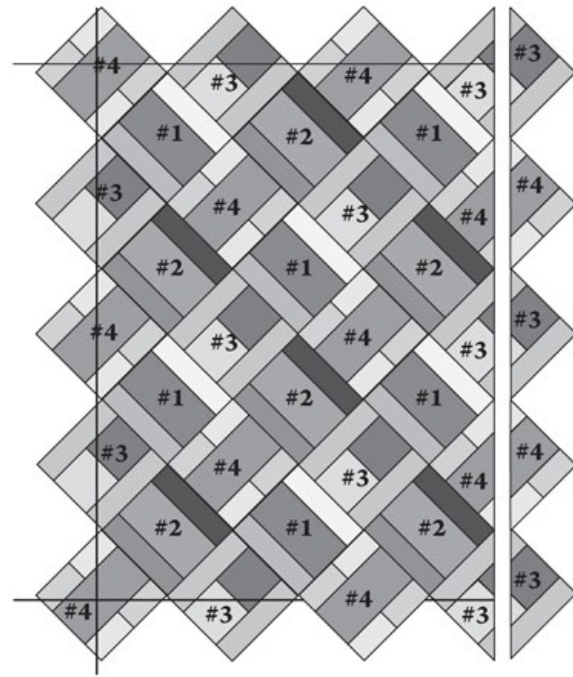
6. Sew blocks together into diagonal rows, then join rows according to the diagram. Press.



7. Trim all sides of the quilt $1/4"$ from the inner tip of the blocks. Be careful when handling the quilt after trimming since bias edges will be on the outside of the quilt.

8. Sew **A** $6\ 1/2" \times 57"$ (or the exact length of your quilt) to the SIDES of the quilt. Next, sew a corner block to both ends of $2\ \mathbf{A}\ 6\ 1/2" \times 43"$ (or the exact width of your quilt), then sew to the TOP and BOTTOM of the quilt according to the diagram.

9. The quilt measures approximately $55" \times 69"$. Make backing (**Fabric J**) at least $8"$ larger than the top. Layer and baste top, batting, and backing together. Quilt as desired. Attach binding (**Fabric J**) and enjoy!!



Q1410

PROJECT SHEET : QS65-1-565

Silk Road™

BY DEBRA VALENCIA™

PRESENTED BY Insights



A 61751-284
1 1/3 YARDS



B 61752-132
5/8 YARD



C 61752-438
1 YARD



D 61753-371
5/8 YARD



E 61753-641
5/8 YARD



F 61754-238
1 3/8 YARDS
INCLUDES BINDING



G 61755-273
3/8 YARD



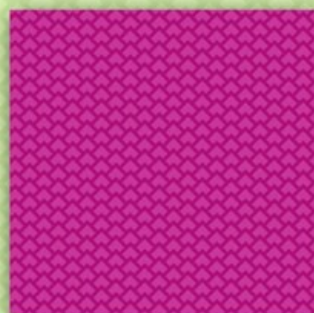
H 61755-428
3/8 YARD



I 61756-723
5/8 YARD



J 61756-823
5/8 YARD (P)
3 2/3 YARDS (B)



K 61757-333
3/8 YARD



L 61757-777
3/8 YARD



M 61757-888
1/2 YARD

P - PIECING B- BACKING