

Q1410

Silk Road

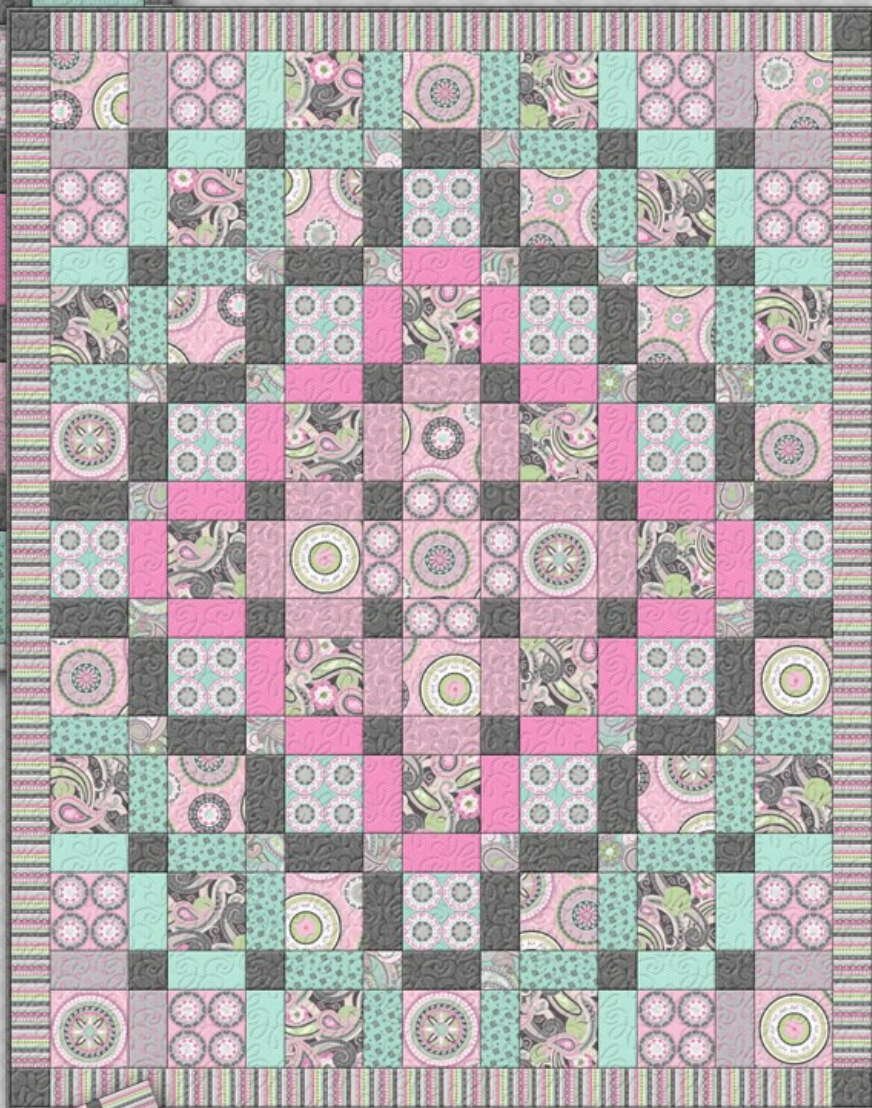
FREE
PATTERN
OFFERED
IN INDEPENDENT
QUILT SHOPS TO
COMPLEMENT THIS
FABRIC COLLECTION.

BY DEBRA™
VALENCIA

PRESENTED BY
INSIGHTS



SLATE CRIB QUILT
APPROX. FINISHED SIZE: 36" X 45"



SLATE TWIN QUILT
APPROX. FINISHED SIZE: 66" X 84"



SUGGESTED
BABY CRIB WITH QUILT



SUGGESTED
PILLOWCASES

Like us on
Facebook

Silk Road - Slate

Please read all instructions carefully before starting. All instructions include a 1/4" seam allowance and strips are cut from selvage to selvage unless otherwise stated.

Twin Quilt Instructions

approximate size: 66" x 84"

1. Cut the following:

Fabric A - fussy cut 23 - 6 1/2" x 6 1/2" squares by centering designs evenly

Fabric B - Cut 3 - 3 1/2" strips, subcut 24 - 3 1/2" squares (cornerstones)

Fabric C - Cut 4 - 6 1/2" strips, subcut 20 - 6 1/2" squares

Fabric D - Cut 8 - 6 1/2" x 6 1/2" squares and 4 - 3 1/2" x 6 1/2" (sashing), centering designs evenly

Fabric E - Cut 12 - 6 1/2" x 6 1/2" squares, centering designs evenly

Fabric F - Borders: Cut 8 - 3 1/2" strips, sew end to end, then subcut 2 - 3 1/2" x 78 1/2" and 2 - 3 1/2" x 60 1/2"

Fabric G - Cut 2 - 3 1/2" strips, subcut 12 - 3 1/2" x 6 1/2" (sashing)

Fabric H - Cut 8 - 3 1/2" strips, subcut 26 - 3 1/2" x 6 1/2" (sashing) and 28 - 3 1/2" squares (cornerstones and corners of borders)

BINDING - Cut 9 - 2 1/4" strips, sew end to end and press in half

Fabric I - Cut 4 - 3 1/2" strips, subcut 24 - 3 1/2" x 6 1/2" (sashing)

Fabric J - Cut 2 - 3 1/2" strips, subcut 8 - 3 1/2" x 6 1/2" (sashing)

Fabric K - Cut 4 - 3 1/2" strips, subcut 20 - 3 1/2" x 6 1/2" (sashing)

Fabric L - Cut 3 - 3 1/2" strips, subcut 16 - 3 1/2" x 6 1/2" (sashing)

2. Piecing Order:

1. Arrange 6 1/2" squares, 3 1/2" x 6 1/2" sashing strips, and 3 1/2" cornerstones according to the diagram on the next page. Then sew pieces together by rows. Notice the top 4 rows of blocks and top 4 rows of sashing are identical to the bottom 4 rows of both. Press toward the 6 1/2" squares and 3 1/2" cornerstones. Then join rows of blocks and rows of sashing for the center of the quilt.

2. Borders: sew **F** 3 1/2" x 78 1/2" to the SIDES of the quilt. Next, sew **H** 3 1/2" squares to the ends of 2 **F** 3 1/2" x 60 1/2", then sew to the TOP and BOTTOM of the quilt.

3. The Twin Quilt measures approximately 66 1/2" x 84 1/2". Make backing (**Fabric B**) at least 8" larger than the top. Layer and baste top, batting, and backing together. Quilt as desired. Attach binding (**Fabric H**) and enjoy!!

3 1/2"

3 1/2"

H

F 3 1/2" x 60 1/2"

H

6 1/2"

A J D L C I A I C L D J A

3 1/2" x 6 1/2"

J H L H I B H B I H L H J

3 1/2"

D L C I A H E H A I C L D

L H I B H B K B H B I H L

C I A H E K C K E H A I C

I B H B K H G H K B H B I

A H E K C G A G C K E H A

H B K H G H D H G H K B H

E K C G A D A D A G C K E

H B K H G H D H G H K B H

A H E K C G A G C K E H A

I B H B K H G H K B H B I

C I A H E K C K E H A I C

L H I B H B K B H B I H L

D L C I A H E H A I C L D

J H L H I B H B I H L H J

A J D L C I A I C L D J A

H

F 3 1/2" x 60 1/2"

H

Crib Quilt Instructions

approximate size: 36" x 45"

1. Cut the following:

Fabric A - fussy cut 10 - 6 1/2" x 6 1/2" squares by centering designs evenly

Fabric B - Backing - Cut 1 - 36 1/2" x 45 1/2" (or exact size of your top)

Fabric C - Cut 2 - 6 1/2" strips, subcut 10 - 6 1/2" squares

Fabric D - fussy cut 4 - 3 1/2" x 6 1/2" (sashing)

Fabric E - fussy cut 4 - 3 1/2" x 6 1/2" (sashing)

Fabric F - Cut 4 - 2" strips, sew end to end, then subcut 2 - 2" x 42 1/2" and 2 - 2" x 36 1/2"

Fabric G - Cut 2 - 3 1/2" strips, subcut 7 - 3 1/2" x 6 1/2" (sashing)

Fabric H - Cut 2 - 3 1/2" strips, subcut 12 - 3 1/2" squares (cornerstones)

Fabric I - Cut 1 - 3 1/2" strip, subcut 6 - 3 1/2" x 6 1/2" (sashing)

Fabric J - Cut 1 - 3 1/2" strip, subcut 2 - 3 1/2" x 6 1/2" (sashing)

Fabric K - Cut 1 - 3 1/2" strip, subcut 6 - 3 1/2" x 6 1/2" (sashing)

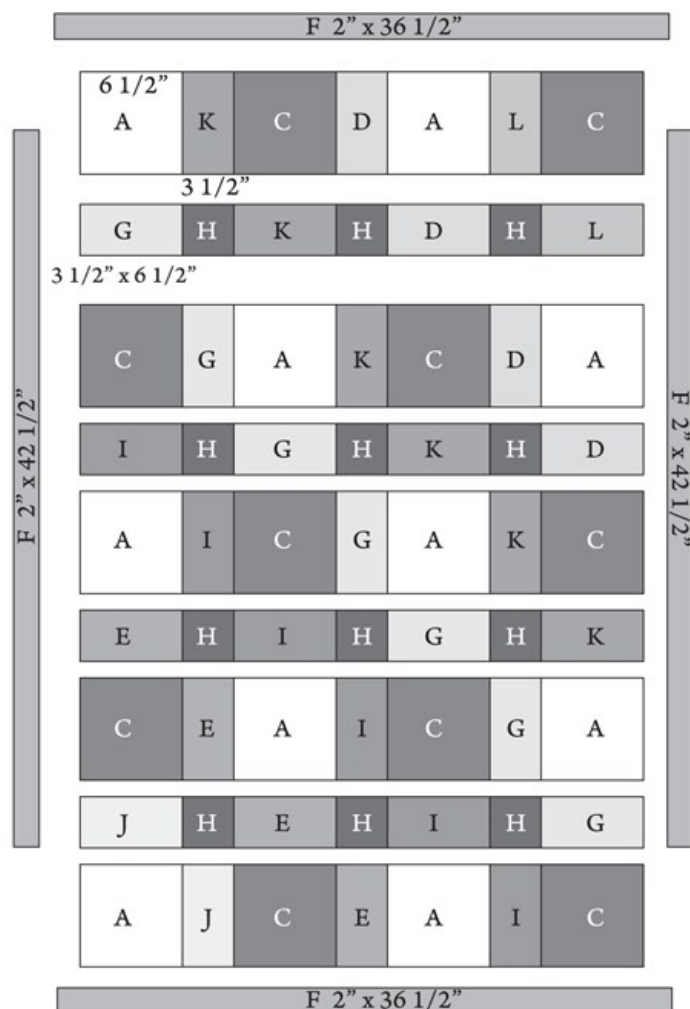
Fabric L - Cut 1 - 3 1/2" strip, subcut 2 - 3 1/2" x 6 1/2" (sashing)

Batting Cut 1 - 36 1/2" x 45 1/2"

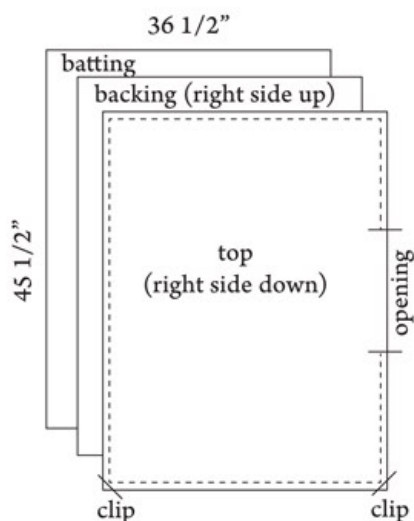
2. Piecing Order:

1. Arrange 6 1/2" squares, 3 1/2" x 6 1/2" sashing strips, and 3 1/2" cornerstones according to the diagram. Then sew pieces together by rows. Press toward 6 1/2" squares and 3 1/2" cornerstones. Then join rows of blocks and rows of sashing for the center of the quilt.

2. Sew F 2" x 42 1/2" to the SIDES of the quilt, then sew F 2" x 36 1/2" to the TOP and BOTTOM.



3. Layer batting, backing (right side up), and quilt top (right side down). Match raw edges and secure layers with pins. Stitch 1/4" around the edge of the quilt, leaving approximately 10" open in the middle of a side for turning. Clip corners and turn right side out. Press. Stitch opening closed. Topstitch 1/4" around the outer edge to create faux binding. Add optional quilting and enjoy!!



Q1410

Silk Road

BY DEBRA VALENCIA™

PRESENTED BY INSIGHTS



A 61751-319
CRIB: 2/3 YARD
TWIN: 1 2/3 YARDS



B 61752-439
CRIB: 1 1/2 YARDS
BACKING ONLY
TWIN: 1/2 YARD (P)
5 1/2 YARDS (B)



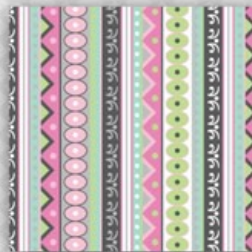
C 61752-937
CRIB: 1/2 YARD
TWIN: 7/8 YARD



D 61753-393
CRIB: 1/4 YARD
TWIN: 2/3 YARD



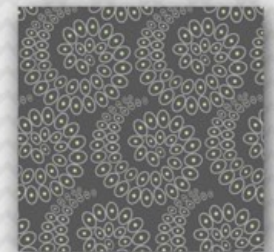
E 61753-413
CRIB: 1/4 YARD
TWIN: 5/8 YARD



F 61754-397
CRIB: 1/3 YARD
TWIN: 1 YARD



G 61755-393
CRIB: 1/3 YARD
TWIN: 1/3 YARD



H 61755-997
CRIB: 1/3 YARD
TWIN: 1 2/3 YARDS
INCLUDES BINDING



I 61756-493
CRIB: 1/4 YARD
TWIN: 1/2 YARD



J 61756-934
CRIB: 1/4 YARD
TWIN: 1/3 YARD



K 61757-300
CRIB: 1/4 YARD
TWIN: 1/2 YARD



L 61757-400
CRIB: 1/4 YARD
TWIN: 1/2 YARD

P - PIECING B- BACKING